



Installation AD2 Riding Access Ladder 2021

PROJECT INFORMATION

- Main-contractor : **Verhoef Access Technology**
- Project Ref : **Project No. B00909**
- Locatie: **Kay 1183 – Kallo, Belgium**
- Start date : **07 Okt 2021**
- End date : **20 Okt 2021**
- Total execution days : **14-days**
- Date “hand-over” Gangway 9090 : **20 Okt 2021**



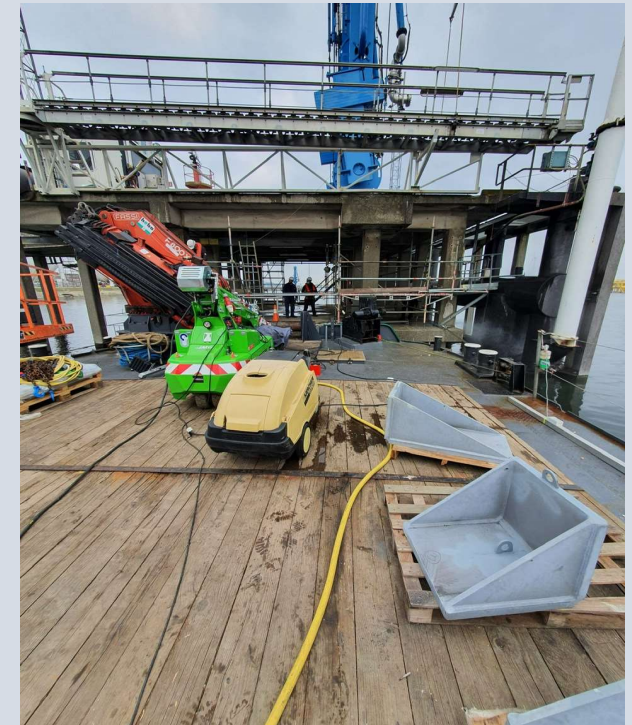
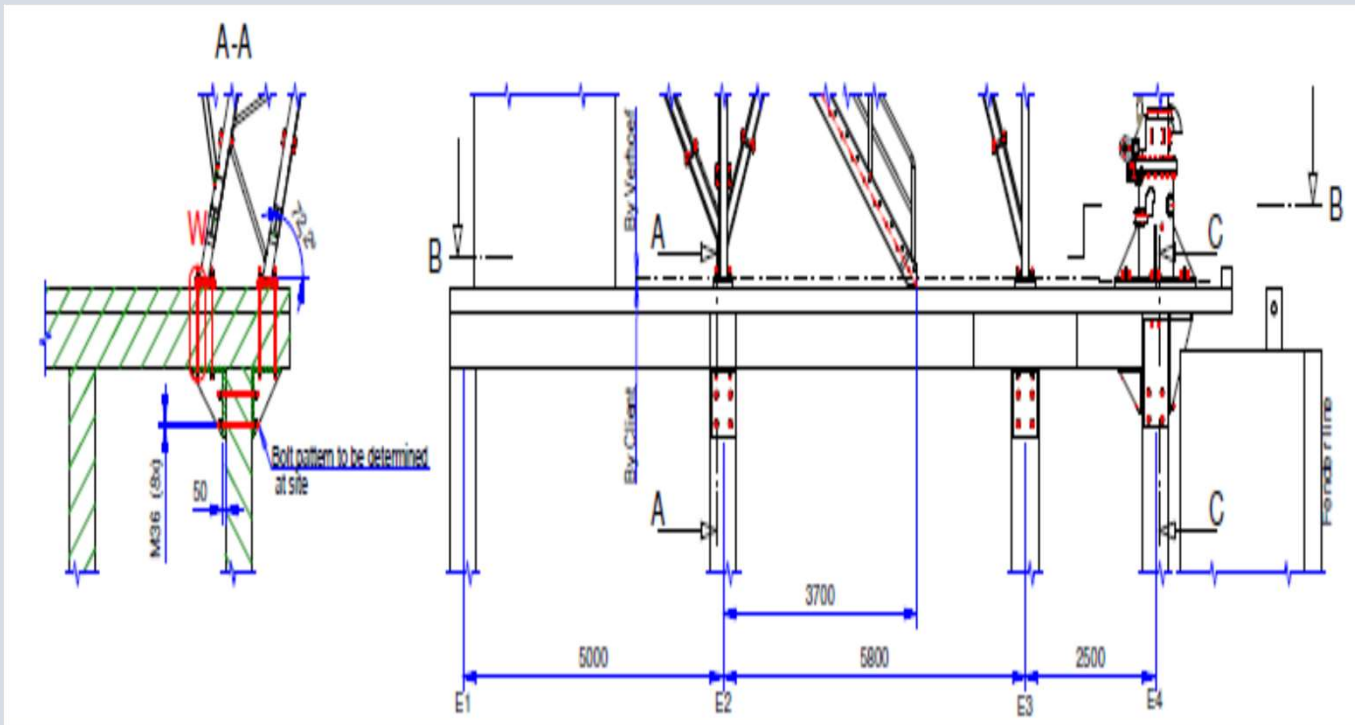
Fase 1 – Project Preparations

- Prepare all QHSE Documentation (JSERA/WMS)
- Prepare crane barge Joy.
- Load 2.5t electrical crane – Type : JMG MC25S.
- Load Manlift JLG800 AJ 140 onto crane barge
- Load daimand drilling equipment.



Fase 2 – Measuring for drill-works

- Measure the exact location of holes in Yetty foundation.



Fase 3 – Daimond Drilling works

- ❑ Utilize Diamond Drilling System (water-cooled)
- ❑ Type Machine : Hilti 120 Diamond Drilling

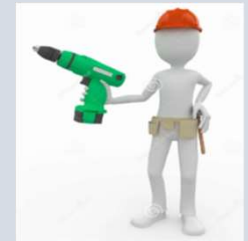


Fase 4 – Install Reinforcement Plates

- ❑ After drilling the holes – reinforcement plates are been temporary installed in order to measure the precise position of the holes in reinforcement plates.



Fase 5 – Steel Drilling Reinforcement Plates



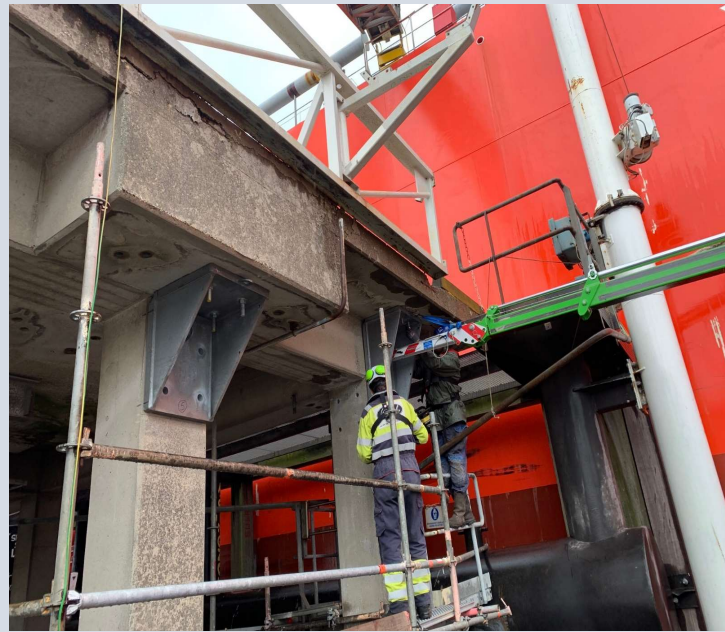
- ❑ After precise been measured all plates reinforcement-plates – the plates been loaded onto trailer for extern computerized drilling (AMT)
- ❑ Type Drilling-machine : Optimum_Opti Drill DR6.



Fase 6 – Installation Reinforcement plates



- ❑ After been drilled and been well preserved , the plates can be installed on location bottom-side Jetty Deck.



Fase 7 – Removal Old Gang-Way

- ❑ After reinforcement plates are installed , the removal of the old Gangway can be started.
- ❑ Crane Fassi F800_RA-2.28 been used for this operation.



Fase 8 – Loading New Gang-Way

- ❑ Sail with crane-barge Joy to designated area, in order to off-load old Gang-Way (**close to the work-site*)
- ❑ Loading new Gangway (9090) onto Crane barge Joy.



Fase 9 – Installation New Gang-Way

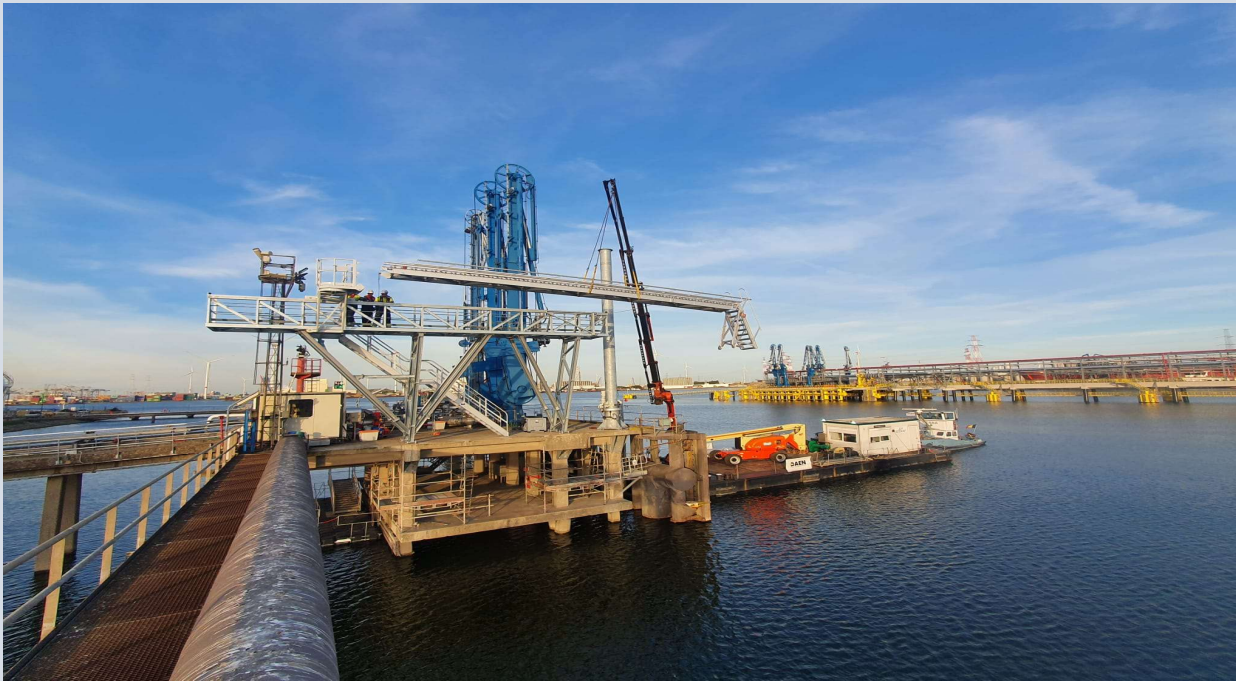


- ❑ After all reinforcement-plates are installed & tightend as per engineerd /designed KN force the installation of the new Gang-Way 9090 can be started 😊



Fase 10 – Finalizing Gangway Installation

- Installation of alu. walk-way
- Installation of top-crane piece



Fase 11 – Finalizing Gangway Installation

- Electrical connection made by client
- Final operational check “hand-over”
- Personal training to client done by Verhoef

